



## 2025 PRODUCT CATALOG



**THE ONLY AGENCY OFFERING A COMPLETE BACKYARD EXPERIENCE**



Formerly The Association of Pool & Spa Professionals/National Swimming Pool Foundation

### IMG MAIN OFFICE

5424 Rufe Snow Drive, Suite 501  
North Richland Hills, Texas 76180  
(817) 281-0705 (phone)

<b>ULTRAPURE .....</b>	<b>3</b>	<b>UNION/BOXER.....</b>	<b>12</b>
<b>HASA .....</b>	<b>4</b>	<b>LOCHINVAR .....</b>	<b>13</b>
<b>ORENDA .....</b>	<b>5</b>	<b>SOLLOS .....</b>	<b>14</b>
<b>LOOP-LOC.....</b>	<b>6-7</b>	<b>FURRION.....</b>	<b>15</b>
<b>NIRVANA.....</b>	<b>8</b>	<b>OUTDECO / MODINEX .....</b>	<b>16</b>
<b>BRIGHTLINE .....</b>	<b>9</b>	<b>FIREGEAR OUTDOORS .....</b>	<b>17</b>
<b>BLUE DEVIL/VALTERRA.....</b>	<b>10</b>	<b>BULL OUTDOOR PRODUCTS .....</b>	<b>18-19</b>
<b>ATLAS .....</b>	<b>11</b>		

**Darrell Plemons**  
Owner – Territory Manager  
(817) 228-2453  
bigd@outdoorimg.com  
North Texas, Oklahoma & South Louisiana

### OUTSIDE SALES TEAM

**Colby Griffith**  
Owner – Territory manager  
(210) 215-1940  
colby@outdoorimg.com  
Central / South / West Texas, South Louisiana, Colorado & New Mexico

**Adam Shreck**  
Territory Manager  
(817) 729-8355  
shreck@outdoorimg.com  
Dallas/Fort Worth, East Texas, North Louisiana & Arkansas

**Keith Burchert**  
Territory Manager  
(281) 414-8120  
keith@outdoorimg.com  
Houston & Southwest Louisiana

**Beth Plemons**  
Sales & Administrative Coordinator  
(817) 281-0705

### INSIDE SALES & SUPPORT

**Janis Reese**  
Accounting/HR  
(817) 281-0705



## Why Ozone?

### A MENU MANAGEMENT APPROACH TO CLEAN WATER

Even though there is no proven effective replacement for Chlorine or Bromine in the disinfection process in swimming pools & spas, alternative treatments such as Ozone and UV can dramatically improve water quality with less sanitizers.

Whereas Chlorine and Bromine provide a measurable residual for the sanitization process, they are often unable to complete the water purification process on their own.

Frequently contaminants multiply too quickly for these sanitizers to effectively kill all the viruses, bacteria, and algae found in pools & spas.

Furthermore, after water is sanitized to be classified as “clean” water, the dead contaminants must be removed or oxidized.

AUTHORIZED DEALERS MAY QUALIFY FOR  
ADDITIONAL REBATES AND INCENTIVES



**UV LIGHT  
STERILIZES  
OR STOPS THE  
REPRODUCTION  
OF CONTAMINANTS  
IN ORDER FOR A  
SANITIZER  
TO EFFECTIVELY  
“KILL” THE  
CONTAMINANTS**

### POOL UNITS



**Ozone reduces Chlorine  
Consumption as much as 70%  
by Oxidizing or removing dead  
contaminants from the water.**



### SPA UNITS



SCAN FOR MORE INFO



# LIQUID IS CLEARLY BETTER

Beating out solids—liquid sanitization is trending for simplified pool care.



- ✓ Highest Purity
- ✓ Works Immediately
- ✓ No Added CYA or Calcium
- ✓ Safe, Clean and Clear Blue Pool Water

Ancillary Products Now Available in Texas Warehouses



GYSAR TILE BRIGHT



CALCIUM CHLORIDE



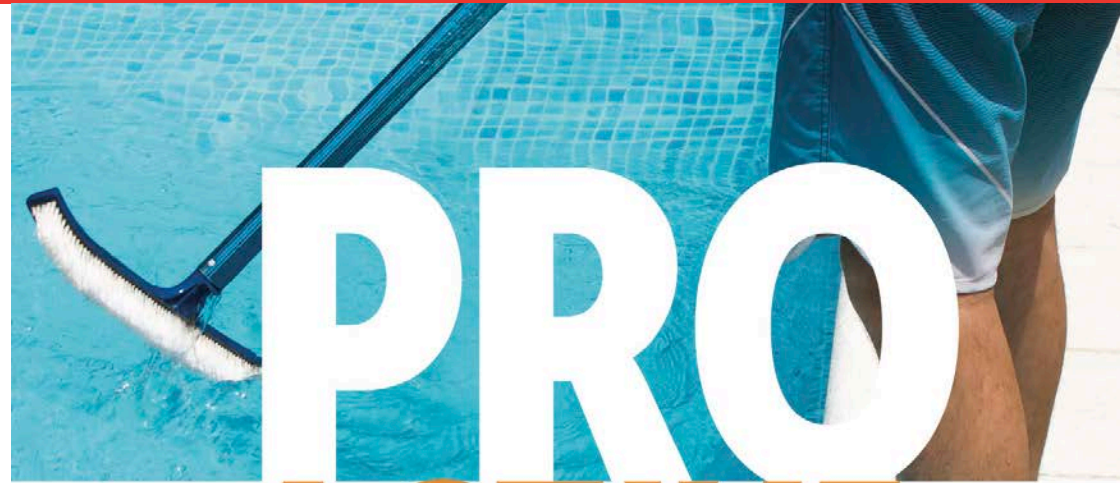
SUPER STAIN OUT



CONDITIONER



ALKALINITY UP

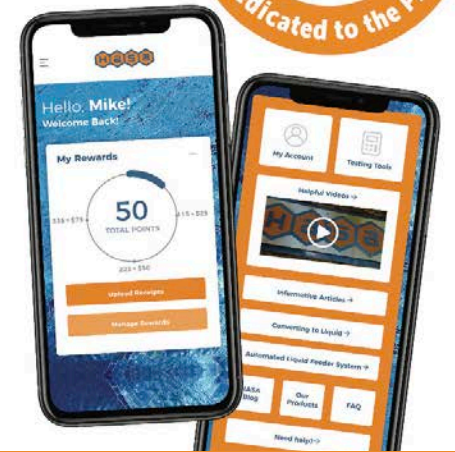


# PRO ACTIVE

The Most Successful Pool Pros Enjoy **HASA Pro Rewards™**

Track your rewards points. Upload your HASA invoices. It's that easy!

- Earn HASA product vouchers
- Accrue cash or gift cards
- Find Pool Water Chemistry Education Resources
- Manage your account on the go



SAVE MONEY AND ELIMINATE THE DISPOSAL OF EMPTY BOTTLES AND BUCKETS WITH THE HASA DEPOSIT PROGRAM WHEN PURCHASING HASA SANICHLOR AND HASA MURIATIC ACID.

outdoorimg.com





SCAN FOR MORE INFO

## SCALE AND METAL CONTROL

Great for Pool Startups!  
Removes and helps prevent calcium scale and metal stains



got scale?

SC-1000

SC-1000 Scale & Metal Control is a non-phosphonic acid sequester formulated to control minerals and metals in the water. Use SC-1000 during initial fill-up of the pool, along with the Orenda App to balance the LSI of the water. Because SC-1000 is not phosphate-based, it does not conflict with phosphate removers like PR-10,000.

## DOWNLOAD OUR APP



VISIT [ORENDATECH.COM](http://ORENDATECH.COM)  
FOR TRAINING



## START-UP BARREL

30 Gallon Start-up Barrel



ORE-50-1030  
ORE-45-0001

## PHOSPHATE REMOVER CONCENTRATE

All-Natural formula removes phosphates on contact



PR-10,000

PR-10,000 is the strongest, most concentrated phosphate remover available in the aquatics market. It is a rare-earth formula that reacts immediately with phosphates on contact. It crystallizes phosphorous, which then falls out of solution to be filtered out or vacuumed. PR-10,000 will cloud up the water for about 24-36 hours in the presence of high phosphates, but the cloudiness depends on the amount of phosphates in the water. Cloudiness is a normal part of the reaction. Watch videos on our website for more.

## ENZYME + PHOSPHATE REMOVER

All-Natural enzyme formula reduces non-living organics and phosphates



CV-700

CV-700 Enzyme + Phosphate remover improves water clarity and chlorine efficiency. The enzymes break down and digest non-living organic waste, which helps chlorine get through contamination and build a residual of free available chlorine for sanitation. Removing phosphates benefits chlorine too; phosphates weaken chlorine (HOCl to OCl<sup>-</sup>). Visit our website to learn why.

## ENZYME WATER CLEANER

All-Natural formula reduces non-living organics to create optimal water clarity



CV-600

CV-600 Catalytic Enzyme Water Cleaner Concentrate is a unique, stabilized enzyme that effectively breaks down and digests organic contaminants commonly found in pools, spas and other recreational water. Routine application of CV-600 will positively maintain water clarity, directly address organic contamination, and boost chlorine efficiency.

## CHITOSAN CLARIFIER + ENZYME

All-Natural clarifier with no synthetic polymers or dyes



CE-CLARIFIER

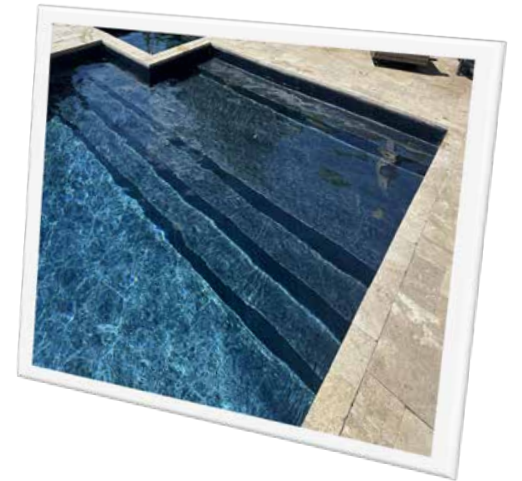
CE-Clarifier+ Enzyme is a potent pool clarifier. The Chitosan attracts particles to be filtered out, while the enzymes break down and digest oils and other non-living organic waste.



SCAN FOR MORE INFO



# LUXURY LINERS



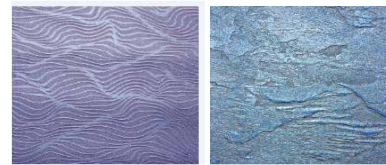
## Cherished Favorites



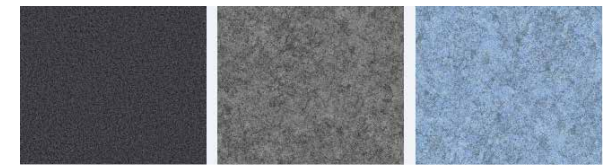
## Boutique Collection



## Embossed Collection



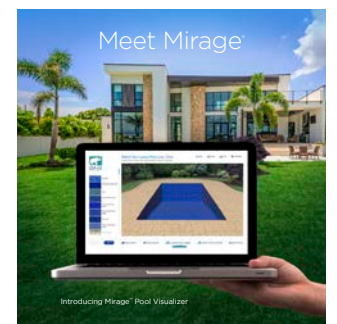
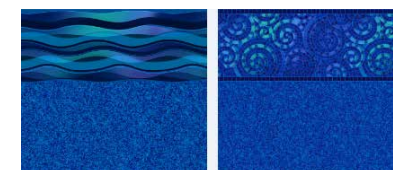
## Gunite Series



## Pearl Essence™ (Exclusively from Loop Loc)



## Aqua Shift



outdoorimg.com



**LOOP-LOC**<sup>®</sup>  
THE ONE. THE ONLY.



SCAN FOR MORE INFO

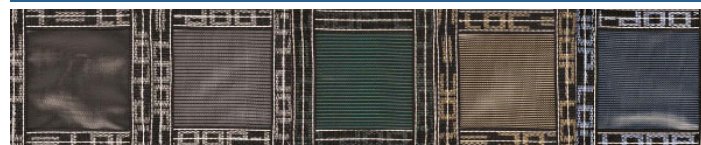
## HERE ARE 15 REASONS WHY

- 1** A LOOP-LOC cover is the only safety cover to be awarded UL certification year after year.
- 2** Mesh construction lets rain and melting snow drain right through.
- 3** LOOP-LOC is so durable, it's backed by a 15-year prorated warranty and so safe, it may reduce your liability insurance.
- 4** LOOP-LOC is so lightweight, putting it on and taking it off your pool is a snap.
- 5** LOOP-LOC blends beautifully into any backyard, with your choice of standard Spring Green or four optional designer colors.
- 6** LOOP-LOC's patented CABLE-LOC™ and GAPGUARD® Child Safety Intrusion Barriers close the gap created when a pool includes raised obstructions located at the cover's edge.
- 7** The polyester bonded thread used in LOOP-LOC covers is 30% stronger in thread size and produces a higher margin of safety in all seams (compared to our competitors).
- 8** Double-perimeter webbing and double-thick straps give our covers an incredibly high break strength.
- 9** We use extremely high-strength, non-corrosive 302/304 grade stainless steel springs for superior weight-bearing capacity.
- 10** Unique brass anchors recess flush with the deck when the cover is removed.
- 11** We sew the webbing to the cover using contrasting white thread, instead of black, to ensure that not a single stitch is missed.
- 12** We use 87% black yarn in our fabric for superior UV stability.
- 13** Chafe strips are manufactured with exclusively virgin material – not "regrind", which tends to stain decking.
- 14** Non-corrosive aluminum tips are double-notched for stability.
- 15** The large X-tacking on LOOP-LOC straps is sewn manually for precise placement and maximum strength.



LOOP-LOC is proud to introduce "IMAGE-LOC", the revolutionary way to measure covers with photos. Never A-B again! One person, one camera and following simple instructions will achieve highly accurate cover measurements.

### COMPLEMENT YOUR OUTDOOR DECOR!



BLACK GRAY GREEN TAN BLUE

Covers Now Available in Aqua-Xtreme Mesh



THE FIRST REMOVABLE FENCING GOOD ENOUGH TO COME FROM LOOP-LOC

outdoorimg.com





SCAN FOR MORE INFO



# NIRVANA



## SIMPLY THE BEST HEAT PUMPS & CHILLERS ON THE MARKET

- KEEP YOUR POOL WARM ALL THE TIME!
- ENERGY EFFICIENT, RELIABLE AND DURABLE
- ENVIRONMENTALLY FRIENDLY
- LOWEST POOL HEATING COSTS
- GREAT FOR POOL/SPA COMBOS



Best  
Warranty



Very  
Quiet



Wifi  
Options



Energy  
efficient

HIGHEST  
EFFICIENCIES  
IN THE INDUSTRY  
HIGH-PERFORMANCE  
COMPONENTS



[outdoorimg.com](http://outdoorimg.com)





SCAN FOR MORE INFO



## THE BENEFITS ARE CLEAR.

### **Clearer, Cleaner Water**

BrightLine™ quickly and efficiently removes particles as fine as 5 microns.

### **Longer Lasting**

Since BrightLine does not breakdown like typical sand filter media, it can last up to 3 times longer.

### **Backwash Savings**

Because BrightLine utilizes the entire filter bed and does not pack or channel, backwashing takes less time and is required less frequently, saving water and chemicals.

### **Less Media Required**

BrightLine is 20% less dense than typical sand filter media, requiring less media to fill the same space.

### **Environmentally Friendly**

Made from 100% recycled materials

Available in 40 lb. clear, plastic bags

For use in sand filters including those which specify #20 silica sand

## BETTER THAN SAND.



[outdoorimg.com](http://outdoorimg.com)



SCAN FOR MORE INFO

# blue devil™ Pool & Spa Accessories

A full line of Blue Devil maintenance accessories and Valterra products are offered to the Pool & Spa Industry on a worldwide basis.

We specialize in pool water test kits and reagents, valves, vacuums, brushes, nets, and poles for use by consumers and pool service professionals.



Brushes



Hoses



Leafbaggers



Leaf Rakes & Skimmer Nets



Poles



Pool Water Testing Products



Pool & Spa Accessories



Pumps, Filters & Combo Packs

TOP PICK FOR LEAF VACUUM



outdoorimg.com



SCAN FOR MORE INFO

# Pool & Spa repairs are child's play ... with Epoxybond®



POOL AND SPA REPAIRS  
ARE QUICK, EASY  
AND INEXPENSIVE  
WITH ATLAS' FAMILY OF  
EPOXYBOND® PRODUCTS



**POOL PUTTY** stops leaks and repairs concrete – underwater!

**POOL PASTE** resets tiles and fixes hairline cracks in virtually any surface, including plastic, concrete and fiberglass.

**POOL PASTE FAST SET** makes repairs to hot tubs, spas and pools – in just 5 minutes!

**CONCRETE POOL PATCH** repairs cracks, chips or spalled surfaces; molds new corners and coping; and sets anchor bolts – all in only 10 minutes!

[outdoorimg.com](http://outdoorimg.com)



SCAN FOR MORE INFO



## Formulated to precise standards Repair soft or rigid vinyl plastic even **UNDER WATER**



**Boxer #100 Vinyl Adhesive**  
Repairs Damaged Vinyl Underwater.

**CAT. NO. 859  
POOL REPAIR KIT**  
CONTAINS: 2 oz. tube of #100 vinyl adhesive 130 sq. in. of patching vinyl and dauber-applicator.  
PACKED: 24 per display carton.

**CAT. NO. 759  
POOL REPAIR KIT (1 OZ.)**  
CONTAINS: 1 oz. tube of #100 vinyl adhesive and 42 sq. in. of patching vinyl.  
PACKED: 24 per shipping carton.

**CAT. NO. 760  
POOL REPAIR KIT (1/2 OZ.)**  
CONTAINS: 1/2 oz. tube of #100 vinyl adhesive and 21 sq. in. of patching vinyl.  
PACKED: 24 per shipping carton.



**CAT. NO. 116  
VINYL ADHESIVE**  
CONTAINS: One pint cans of #100 Vinyl Adhesive and dauber-applicator.  
PACKED: 6 per shipping carton.

**CAT. NO. 104  
VINYL ADHESIVE**  
CONTAINS: 4 oz. cans of #100 Vinyl Adhesive and dauber-applicator.  
PACKED: 24 per shipping carton.



### Vinyl Patches

**CAT. NO. 20, 24 and 26**  
EACH CONTAINS: Two pieces of Heavy 20 Gauge Vinyl, over 260 square inches.  
#20 White Vinyl - 24 per shipping carton.  
#24 Blue Vinyl - 24 per shipping carton.  
#26 Clear Vinyl - 24 per shipping carton.

**CAT. NO. 25**  
CONTAINS: Two pieces of 12 Gauge Clear Vinyl Packing Material. Over 260 square inches.  
PACKED: 24 per shipping carton.



**CAT. NO. 110  
POOL REPAIR KIT**  
CONTAINS: 4 oz. can of #100 vinyl adhesive, dauber and 500 sq in of patching vinyl. Our DELUXE KIT features an ample supply of liquid adhesive and plenty of vinyl.  
PACKED: 24 per shipping carton.



For over half a century, the Boxer "100" Vinyl Repair Kit (the original Boxer product) has been a popular tool for mending vinyl.

**Since 1950**



**LET BOXER'S FAMILY OF PRODUCTS HELP KEEP THE FUN IN THE POOL!**

[outdoorimg.com](http://outdoorimg.com)



SCAN FOR MORE INFO

ENGINEERED  
TO BE THE  
BEST



## ATTENTION TO EVERY DETAIL SATISFIES EVERY NEED!

Adding a high-end pool or spa reflects a desire for the good life. It's an investment that enhances lifestyle – an oasis of relaxation and recreation, accessible any time, right outside the door.

Today, pool and spa builders must promise fast heat-up and comfortable water temperature, available quickly and efficiently. The master builder's pool heater checklist also includes...

- Superior quality for trouble-free performance, backed by service-friendly design
- Attention to details for fast, easy installation to reduce labor and material costs
- Installation flexibility to work seamlessly with the aesthetics of the new pool or spa

**Lochinvar®** is the most innovative manufacturer of water heaters and heating boilers, serving the extraordinary demands of commercial buildings throughout the world. Our engineering excellence and commitment to understanding customer needs has produced EnergyRite®, the industry's most advanced pool and spa heater, for homeowners who want the best of everything.

**HOT PERFORMANCE,  
COOL FOR THE ENVIRONMENT!**



EnergyRite heats up fast, saves money and helps conserve our natural resources with Low-NOx emissions that meet or exceed the most stringent "green" standards, anywhere in the country!

# EnergyRite®

Pool & Spa Heater



## HEAT UP FASTER!

Five EnergyRite models offer power to guarantee speed-heating for any size pool or spa...from 150,000 Btu/hr to an industry-maximum 400,000 Btu/hr. And Lochinvar's engineering delivers the highest thermal efficiency in its class. It's a combination that provides the industry's fastest heat-up time, and uses less energy so homeowners save money every time they heat their pool or spa!

### THE FORMULA FOR THE FASTEST COMFORT HEAT-UP IS SIMPLE.

1. Provide enough heating power to raise water temperature quickly, on demand.
2. Engineered for efficiency, driving maximum heat into the water.

## COPPER-FIN<sup>2</sup>



outdoorimg.com



SCAN FOR MORE INFO

**sollos**  
LANDSCAPE LIGHTING



P90°

NEW



BOLLARD

NEW



ADJUSTABLE  
BASE PATH LIGHT

NEW



[outdoorimg.com](http://outdoorimg.com)

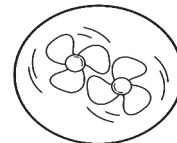


SCAN FOR MORE INFO

# The Outdoor Entertainment Experience



Furrion® Aurora® Outdoor Smart TVs are designed to deliver a superior 4K, ultra high-definition picture in bright areas and are perfect for partially shaded or fully shaded areas. With a 2 year warranty, every component from the screen to the housing has been designed to withstand environmental conditions such as dirt, dust, rain, humidity, UV rays and extreme temperatures.



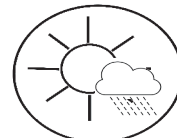
**COOLING SYSTEM**  
with 5 internal fans  
to protect the unit



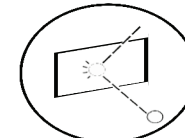
**RANGEXTEND™**  
external antennas for an  
even stronger wifi signal



**BRIGHTER SCREENS**  
that are up to 8X brighter  
than indoor televisions



**IP54-RATED**  
Weatherproof Housing  
to protect against  
the elements



**XTREMESHIELD™**  
to protect against impacts and scratches  
(Sun and Partial Sun only)



**HDR10**  
for vivid colors and deep  
rich contrast

**Furrion Universal  
Outdoor Full Motion Mount**



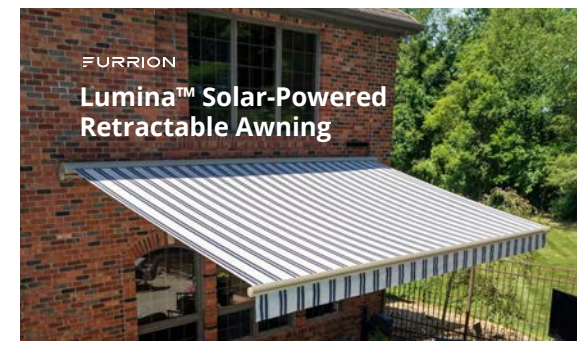
**Furrion Universal  
Outdoor Fixed Tilt Mount**



**Furrion Universal  
Outdoor Ceiling Full Motion Mount**



**Outdoor TV Covers**





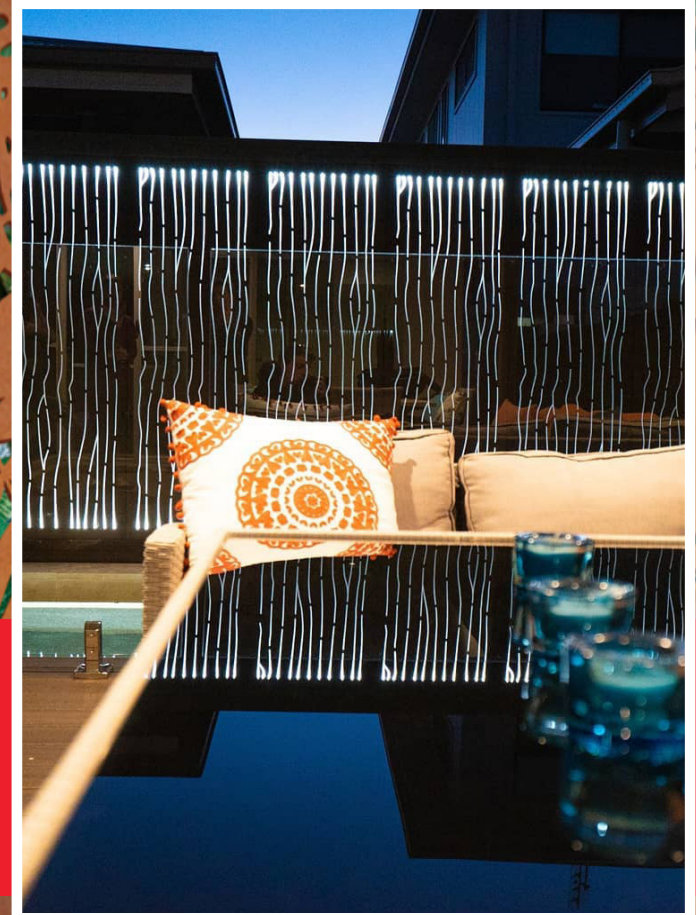
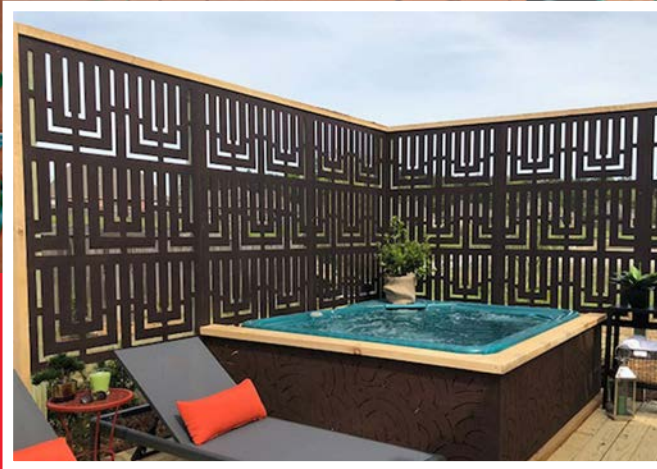
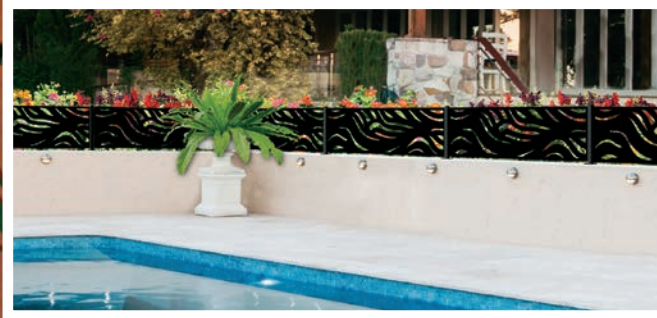
SCAN FOR MORE INFO

OUT  
DECO

modinex

# Modular Decorative Screen Panels

LIFESTYLE  
READY TO  
INSTALL



[outdooring.com](http://outdooring.com)





# FIREGEAR



SCAN FOR MORE INFO

*THE BEST ROOM IN THE HOUSE*  
ISN'T IN THE HOUSE AT ALL.



EVERYTHING NEEDED FOR THE PERFECT OUTDOOR LIVING ENVIRONMENT!



BURNERS • AUTOMATION • JEWELRY • HEAT

**AWS BURNER SYSTEM**  
All Weather Electronic Ignition System



Multiple Fire Features



Pool Certified



Weather Resistant

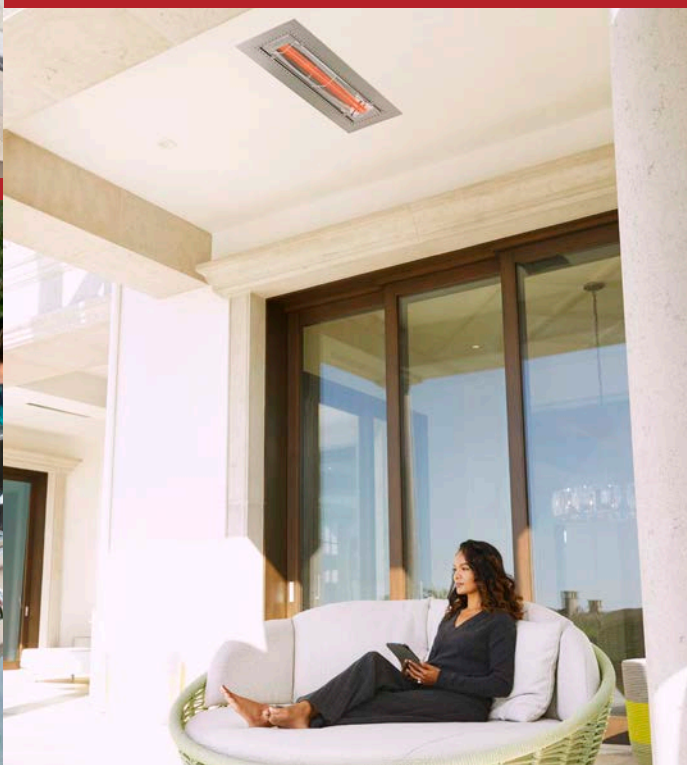


Automation Integration

[outdooring.com](http://outdooring.com)



SCAN FOR MORE INFO



### ANGUS GRILL HEAD



### BULL KEGERATOR 6.6 cu. ft.



### POWER WARM 48" OUTDOOR HEATER



outdooring.com



SCAN FOR MORE INFO

# DuraCABINETS™

HDPE Collection

## THE DETAILS MAKE US DIFFERENT

*DuraKitchens™* pairs quality USA craftsmanship with cutting edge innovation. Constructed of HDPE (*High-density polyethylene*), this new Outdoor Kitchen collection offers elegance with casual sophistication. Careful detailing has gone into the design and execution of each piece, from the well crafted door embossing and edging to the innovative patented, hidden joinery technology for solid joints. The innovative materials, advanced manufacturing, and thoughtful design allow *DuraBull™* to synthesize classic styling with a modern curve. Yes, the future of Outdoor Kitchens has arrived!



### DURABLE CONSTRUCTION

The 3/4" marine-grade HDPE is UV and weather-resistant. Cabinets will never rot, delaminate, or splinter and never need refinishing.



### LIMITED LIFETIME WARRANTY

Assures the cabinetry you are buying is of good quality and without manufacturing defects, for years of worry-free enjoyment.



### INNOVATIVE TECHNOLOGY

Uniquely constructed with a hidden patented joinery technology for a beautiful finish with no visible fasteners.



### EASY TO CLEAN

Easy-to-clean surfaces means you spend more time enjoying your Outdoor Kitchen and less time cleaning them.



### 100% RECYCLABLE

HDPE cabinets have a recycling code of 2, which means at the end of its lifetime, it is easily recycled into usable products for home and garden.



### DESIGNED IN THE USA

Discover the excellence of American ingenuity with our proprietary, and unique products. *DuraBull™* cabinetry is manufactured and hand-assembled with materials sourced from American companies.



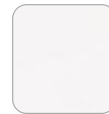
# Easy as 1-2-3

## 1 SELECT A CABINET FACE STYLE & COLOR

Club



Dove



Moderno



Dune



Oxford



Black Jack



Regent



Charcoal Grey



Sedona



Symphony Blue



## 2 SELECT YOUR CABINET OPTIONS & KITCHEN LAYOUT



36" - 4 BURNER GRILL CABINET



SLIDE-IN PRO SIDE BURNER CABINET



DOUBLE TRASH/ RECYCLING CABINET



18" - TRIPLE DRAWER CABINET



24" - DOOR/DRAWER CABINET



42" CORNER RETURN CABINET

\*Over 20 cabinet options available, including: lower, corner, and upper cabinets.

## 3 ADD COMPONENTS TO COMPLETE YOUR DREAM OUTDOOR KITCHEN



outdooring.com



FOLLOW US ON

