



## 2024 PRODUCT CATALOG



**THE ONLY AGENCY OFFERING A COMPLETE BACKYARD EXPERIENCE**



Formerly The Association of Pool & Spa Professionals/National Swimming Pool Foundation

**IMG MAIN OFFICE**

5424 Rufe Snow Drive, Suite 501  
North Richland Hills, Texas 76180  
(817) 281-0705 (phone)  
(817) 281-0725 (fax)

<b>ULTRAPURE .....</b>	<b>3</b>	<b>LOCHINVAR .....</b>	<b>12</b>
<b>HASA .....</b>	<b>4</b>	<b>SOLLOS .....</b>	<b>13</b>
<b>ORENDA .....</b>	<b>5</b>	<b>FURRION.....</b>	<b>14</b>
<b>LOOP-LOC.....</b>	<b>6</b>	<b>OUTDECO / MODINEX .....</b>	<b>15</b>
<b>ICT (INNOVATIVE CONCRETE TECHNOLOGY) .....</b>	<b>7</b>	<b>TRUAUDIO .....</b>	<b>16</b>
<b>BRIGHTLINE .....</b>	<b>8</b>	<b>FIREGEAR OUTDOORS .....</b>	<b>17</b>
<b>UNION/BOXER.....</b>	<b>9</b>	<b>BULL OUTDOOR PRODUCTS .....</b>	<b>18-19</b>
<b>BLUE DEVIL/VALTERRA.....</b>	<b>10</b>		
<b>ATLAS .....</b>	<b>11</b>		

**Darrell Plemons**  
**Owner – Territory Manager**  
**(817) 228-2453**  
**bigd@outdoorimg.com**  
North Texas, Oklahoma & South Louisiana

**OUTSIDE SALES TEAM**

**Colby Griffith**  
**Owner – Territory manager**  
**(210) 215-1940**  
**colby@outdoorimg.com**  
Central / South / West Texas, South Louisiana, Colorado & New Mexico

**Adam Shreck**  
**Territory Manager**  
**(817) 729-8355**  
**shreck@outdoorimg.com**  
Dallas/Fort Worth, East Texas, North Louisiana & Arkansas

**Keith Burchert**  
**Territory Manager**  
**(281) 414-8120**  
**keith@outdoorimg.com**  
Houston

**Beth Plemons**  
**Sales & Administrative Coordinator**  
**(817) 281-0705**

**INSIDE SALES & SUPPORT**

**Janis Reese**  
**Accounting/HR**  
**(817) 281-0705**





## Why Ozone?

### A MENU MANAGEMENT APPROACH TO CLEAN WATER

Even though there is no proven effective replacement for Chlorine or Bromine in the disinfection process in swimming pools & spas, alternative treatments such as Ozone and UV can dramatically improve water quality with less sanitizers.

Whereas Chlorine and Bromine provide a measurable residual for the sanitization process, they are often unable to complete the water purification process on their own.

Frequently contaminants multiply too quickly for these sanitizers to effectively kill all the viruses, bacteria, and algae found in pools & spas.

Furthermore, after water is sanitized to be classified as “clean” water, the dead contaminants must be removed or oxidized.

AUTHORIZED DEALERS MAY QUALIFY FOR  
ADDITIONAL REBATES AND INCENTIVES



**UV LIGHT  
STERILIZES  
OR STOPS THE  
REPRODUCTION  
OF CONTAMINANTS  
IN ORDER FOR A  
SANITIZER  
TO EFFECTIVELY  
“KILL” THE  
CONTAMINANTS**

## POOL UNITS



**Ozone reduces Chlorine  
Consumption as much as 70%  
by Oxidizing or removing dead  
contaminants from the water.**



## SPA UNITS



SCAN FOR MORE INFO



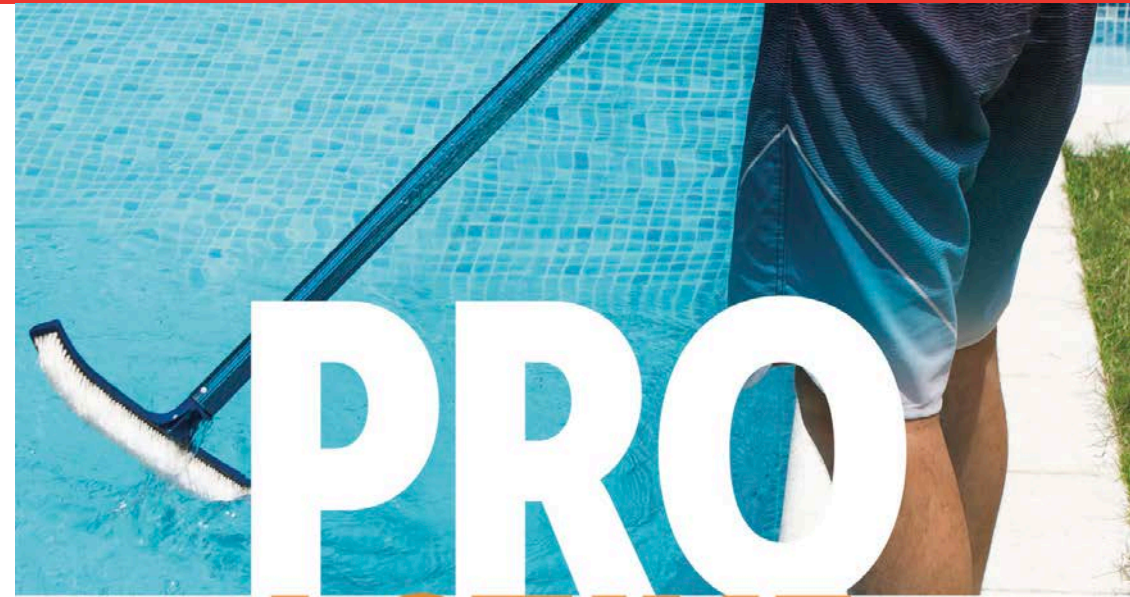
# LIQUID IS CLEARLY BETTER

Beating out solids—liquid sanitization is trending for simplified pool care.



- ✓ **Highest Purity**
- ✓ **Works Immediately**
- ✓ **No Added CYA or Calcium**
- ✓ **Safe, Clean and Clear Blue Pool Water**

SAVE MONEY AND ELIMINATE THE DISPOSAL OF EMPTY BOTTLES AND BUCKETS WITH THE HASA DEPOSIT PROGRAM WHEN PURCHASING HASA SANICHLOR AND HASA MURIATIC ACID.



# PRO ACTIVE

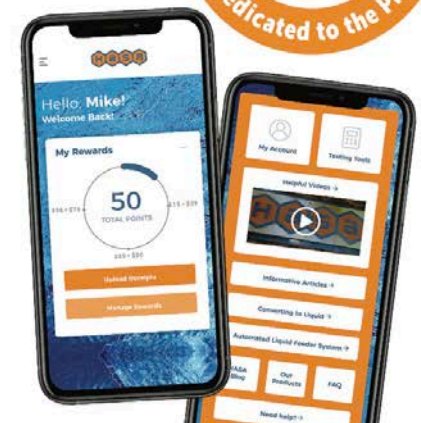
The Most Successful Pool Pros Enjoy **HASA Pro Rewards™**

Track your rewards points. Upload your HASA invoices. It's that easy!

- Earn HASA product vouchers
- Accrue cash or gift cards
- Find Pool Water Chemistry Education Resources
- Manage your account on the go



DOWNLOAD THE APP NOW!



outdoorimg.com







SCAN FOR MORE INFO

## SCALE AND METAL CONTROL

Great for Pool Startups! Removes and helps prevent calcium scale and metal stains



got scale?

SC-1000

SC-1000 Scale & Metal Control is a non-phosphonic acid sequester formulated to control minerals and metals in the water. Use SC-1000 during initial fill-up of the pool, along with the Orenda App to balance the LSI of the water. Because SC-1000 is not phosphate-based, it does not conflict with phosphate removers like PR-10,000.

## DOWNLOAD OUR APP



VISIT [ORENDATECH.COM](http://ORENDATECH.COM)  
FOR TRAINING



## STARTUP TANKS



## PHOSPHATE REMOVER CONCENTRATE

All-Natural formula removes phosphates on contact



PR-10,000

PR-10,000 is the strongest, most concentrated phosphate remover available in the aquatics market. It is a rare-earth formula that reacts immediately with phosphates on contact. It crystallizes phosphorous, which then falls out of solution to be filtered out or vacuumed. PR-10,000 will cloud up the water for about 24-36 hours in the presence of high phosphates, but the cloudiness depends on the amount of phosphates in the water. Cloudiness is a normal part of the reaction. Watch videos on our website for more.

## ENZYME + PHOSPHATE REMOVER

All-Natural enzyme formula reduces non-living organics and phosphates



CV-700

CV-700 Enzyme + Phosphate remover improves water clarity and chlorine efficiency. The enzymes break down and digest non-living organic waste, which helps chlorine get through contamination and build a residual of free available chlorine for sanitation. Removing phosphates benefits chlorine too; phosphates weaken chlorine (HOCl to OCl<sup>-</sup>). Visit our website to learn why.

## ENZYME WATER CLEANER

All-Natural formula reduces non-living organics to create optimal water clarity



CV-600

CV-600 Catalytic Enzyme Water Cleaner Concentrate is a unique, stabilized enzyme that effectively breaks down and digests organic contaminants commonly found in pools, spas and other recreational water. Routine application of CV-600 will positively maintain water clarity, directly address organic contamination, and boost chlorine efficiency.

## CHITOSAN CLARIFIER + ENZYME

All-Natural clarifier with no synthetic polymers or dyes



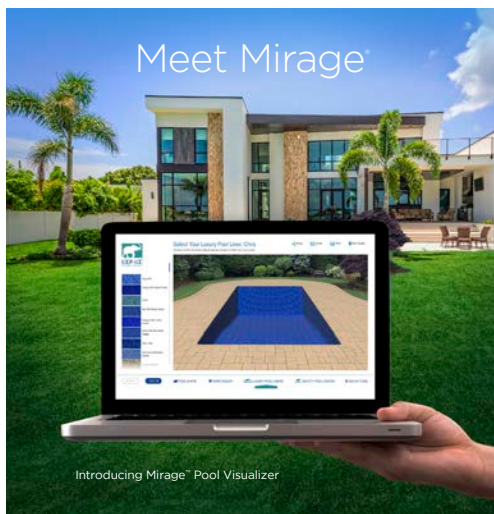
CE-CLARIFIER

CE-Clarifier+ Enzyme is a potent pool clarifier. The Chitosan attracts particles to be filtered out, while the enzymes break down and digest oils and other non-living organic waste.

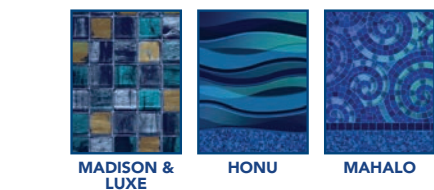
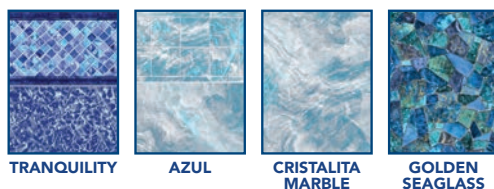




SCAN FOR MORE INFO



**NEW  
2024**

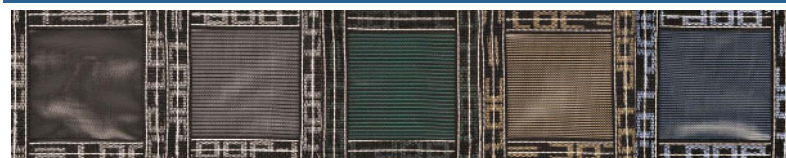


For a complete listing of all liner patterns, see 2024 Loop-Loc catalog or visit [looploc.com](http://looploc.com)

- + MORE EXCLUSIVE DESIGNS THAN ANY OTHER MANUFACTURER
- + HIGHEST QUALITY VIRGIN VINYL IN DURABLE 20 & 28 MIL
- + OPTIONAL ALL-PRINT LINERS FOR ANY BOTTOM PATTERN DESIGN
- + PERFECT FIT FOR ANY POOL
- + EXCLUSIVE 20-YEAR PRORATED WARRANTY



**COMPLEMENT YOUR OUTDOOR DECOR!**



Covers Now Available in Aqua-Xtreme Mesh



THE FIRST REMOVABLE FENCING GOOD ENOUGH TO COME FROM LOOP-LOC

THERE'S ONLY ONE LOOP-LOC.

HERE ARE **15 REASONS** WHY.

- 1 A LOOP-LOC cover is the only safety cover to be awarded UL certification year after year.
- 2 Mesh construction lets rain and melting snow drain right through.
- 3 LOOP-LOC is so durable, it's backed by a 15-year prorated warranty and so safe, it may reduce your liability insurance.
- 4 LOOP-LOC is so lightweight, putting it on and taking it off your pool is a snap.
- 5 LOOP-LOC blends beautifully into any backyard, with your choice of standard Spring Green or four optional designer colors.
- 6 LOOP-LOC's patented CABLE-LOC™ and GAPGUARD® Child Safety Intrusion Barriers close the gap created when a pool includes raised obstructions located at the cover's edge.
- 7 The polyester bonded thread used in LOOP-LOC covers is 30% stronger in thread size and produces a higher margin of safety in all seams (compared to our competitors).
- 8 Double-perimeter webbing and double-thick straps give our covers an incredibly high break strength.
- 9 We use extremely high-strength, non-corrosive 302/304 grade stainless steel springs for superior weight-bearing capacity.
- 10 Unique brass anchors recess flush with the deck when the cover is removed.
- 11 We sew the webbing to the cover using contrasting white thread, instead of black, to ensure that not a single stitch is missed.
- 12 We use 87% black yarn in our fabric for superior UV stability.
- 13 Chafe strips are manufactured with exclusively virgin material – not "regrind", which tends to stain decking.
- 14 Non-corrosive aluminum tips are double-notched for stability.
- 15 The large X-tacking on LOOP-LOC straps is sewn manually for precise placement and maximum strength.



LOOP-LOC is proud to introduce "IMAGE-LOC", the revolutionary way to measure covers with photos. Never A-B again! One person, one camera and following simple instructions will achieve highly accurate cover measurements.

[outdoorimg.com](http://outdoorimg.com)





SCAN FOR MORE INFO

**STONE SHOW H<sub>2</sub>O**  
IS AVAILABLE IN

**ENHANCING**

**INVISIBLE**

**&**

**NANO ENHANCING\***

THREE UNIQUE STYLES TO ACHIEVE  
THE LOOK THAT YOUR JOB NEEDS!



*open to learn more!*

\* Not available in California



**TOTAL SURFACING SYSTEMS**

REASONS TO SEAL PAVERS  
OR  
NATURAL STONE

- PROTECTION OF INVESTMENT
- COLOR RETENTION
- RESISTANCE OF THE ELEMENTS
- INHIBIT MOLD AND ALGAE GROWTH
- EASIER CLEANING AND MAINTENANCE



A complete line of sealers, resins, integral colors and professional coatings to create and protect concrete and stone in extreme environments. ICT products are widely used on Pool Decks, Patios, Driveways, Hotels, Condominiums, as well as Restaurant Floors and Counter Tops.



**H<sub>2</sub>COOL**

THE CHILLEST WAY TO KEEP YOUR CONCRETE COOL

Our new **H<sub>2</sub>COOL** products are formulated with solar infrared reflective pigments, which will reflect IR rays that cause heat and cause surface deterioration.

Reflection of IR rays will keep the surface cooler to the touch and give a much longer lifespan than traditional pigmented coatings!





SCAN FOR MORE INFO



## Formulated to precise standards Repair soft or rigid vinyl plastic even **UNDER WATER**



**Boxer #100 Vinyl Adhesive**  
Repairs Damaged Vinyl Underwater.

**CAT. NO. 859  
POOL REPAIR KIT**  
CONTAINS: 2 oz. tube of #100 vinyl adhesive 130 sq. in. of patching vinyl and dauber-applicator.  
PACKED: 24 per display carton.



**CAT. NO. 759  
POOL REPAIR KIT (1 OZ.)**  
CONTAINS: 1 oz. tube of #100 vinyl adhesive and 42 sq. in. of patching vinyl.  
PACKED: 24 per shipping carton.

**CAT. NO. 760  
POOL REPAIR KIT (1/2 OZ.)**  
CONTAINS: 1/2 oz. tube of #100 vinyl adhesive and 21 sq. in. of patching vinyl.  
PACKED: 24 per shipping carton.



**CAT. NO. 116  
VINYL ADHESIVE**  
CONTAINS: One pint cans of #100 Vinyl Adhesive and dauber-applicator.  
PACKED: 6 per shipping carton.

**CAT. NO. 104  
VINYL ADHESIVE**  
CONTAINS: 4 oz. cans of #100 Vinyl Adhesive and dauber-applicator.  
PACKED: 24 per shipping carton.

### Vinyl Patches

**CAT. NO. 20, 24 and 26**  
EACH CONTAINS: Two pieces of Heavy 20 Gauge Vinyl, over 260 square inches.  
#20 White Vinyl - 24 per shipping carton.  
#24 Blue Vinyl - 24 per shipping carton.  
#26 Clear Vinyl - 24 per shipping carton.

**CAT. NO. 25**  
CONTAINS: Two pieces of 12 Gauge Clear Vinyl Packing Material. Over 260 square inches.  
PACKED: 24 per shipping carton.



**CAT. NO. 110  
POOL REPAIR KIT**  
CONTAINS: 4 oz. can of #100 vinyl adhesive, dauber and 500 sq in of patching vinyl. Our DELUXE KIT features an ample supply of liquid adhesive and plenty of vinyl.  
PACKED: 24 per shipping carton.



For over half a century, the Boxer "100" Vinyl Repair Kit (the original Boxer product) has been a popular tool for mending vinyl.

**Since 1950**



**LET BOXER'S FAMILY OF PRODUCTS HELP KEEP THE FUN IN THE POOL!**

[outdoorimg.com](http://outdoorimg.com)





SCAN FOR MORE INFO



## THE BENEFITS ARE CLEAR.

### **Clearer, Cleaner Water**

BrightLine™ quickly and efficiently removes particles as fine as 5 microns

### **Longer Lasting**

Since BrightLine does not breakdown like typical sand filter media, it can last up to 3 times longer

### **Backwash Savings**

Because BrightLine utilizes the entire filter bed and does not pack or channel, backwashing takes less time and is required less frequently, saving water and chemicals

### **Less Media Required**

BrightLine is 20% less dense than typical sand filter media, requiring less media to fill the same space

### **Environmentally Friendly**

BrightLine is made from 100% recycled materials  
Available in 40 lb. clear, plastic bags.

For use in sand filters including those which specify #20 silica sand.

## BETTER THAN SAND.



[outdoorimg.com](http://outdoorimg.com)



SCAN FOR MORE INFO



A full line of Blue Devil maintenance accessories and Valterra products are offered to the Pool & Spa Industry on a worldwide basis.

We specialize in pool water test kits and reagents, valves, vacuums, brushes, nets, and poles for use by consumers and pool service professionals.



Brushes



Hoses



Leafbaggers



Leaf Rakes & Skimmer Nets



Poles



Pool Water Testing Products



Pool & Spa Accessories



Pumps, Filters & Combo Packs

TOP PICK FOR LEAF VACUUM



outdoorimg.com





SCAN FOR MORE INFO

# Pool & Spa repairs are child's play ... with Epoxybond®



**POOL AND SPA REPAIRS  
ARE QUICK, EASY  
AND INEXPENSIVE  
WITH ATLAS' FAMILY OF  
EPOXYBOND® PRODUCTS:**



**POOL PUTTY** stops leaks and repairs concrete – underwater!

**POOL PASTE** resets tiles and fixes hairline cracks in virtually any surface, including plastic, concrete and fiberglass.

**POOL PASTE FAST SET** makes repairs to hot tubs, spas and pools – in just 5 minutes!

**CONCRETE POOL PATCH** repairs cracks, chips or spalled surfaces; molds new corners and coping; and sets anchor bolts – all in only 10 minutes!

[outdoorimg.com](http://outdoorimg.com)





SCAN FOR MORE INFO



ENGINEERED  
TO BE THE  
BEST



DESIGNED ★ ENGINEERED ★ ASSEMBLED  
**USA**

## ATTENTION TO EVERY DETAIL SATISFIES EVERY NEED!

Adding a high-end pool or spa reflects a desire for the good life. It's an investment that enhances lifestyle – an oasis of relaxation and recreation, accessible any time, right outside the door.

Today, pool and spa builders must promise fast heat-up and comfortable water temperature, available quickly and efficiently. The master builder's pool heater checklist also includes...

- Superior quality for trouble-free performance, backed by service-friendly design
- Attention to details for fast, easy installation to reduce labor and material costs
- Installation flexibility to work seamlessly with the aesthetics of the new pool or spa

Lochinvar® is the most innovative manufacturer of water heaters and heating boilers, serving the extraordinary demands of commercial buildings throughout the world. Our engineering excellence and commitment to understanding customer needs has produced EnergyRite®, the industry's most advanced pool and spa heater, for homeowners who want the best of everything.

**HOT PERFORMANCE,  
COOL FOR THE ENVIRONMENT!**



EnergyRite heats up fast, saves money and helps conserve our natural resources with Low-NOx emissions that meet or exceed the most stringent "green" standards, anywhere in the country!



# EnergyRite®

Pool & Spa Heater

## HEAT UP FASTER!

Five EnergyRite models offer power to guarantee speed-heating for any size pool or spa...from 150,000 Btu/hr to an industry-maximum 400,000 Btu/hr. And Lochinvar's engineering delivers the highest thermal efficiency in its class. It's a combination that provides the industry's fastest heat-up time, and uses less energy so homeowners save money every time they heat their pool or spa!

### THE FORMULA FOR THE FASTEST COMFORT HEAT-UP IS SIMPLE.

1. Provide enough heating power to raise water temperature quickly, on demand.
2. Engineered for efficiency, driving maximum heat into the water.

## COPPER-FIN<sup>2</sup>



**UP TO 89%**  
THERMAL EFFICIENCY

outdoorimg.com





SCAN FOR MORE INFO







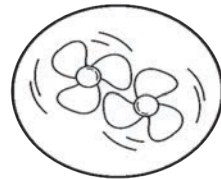
SCAN FOR MORE INFO

# FURRION

## The Outdoor Entertainment Experience



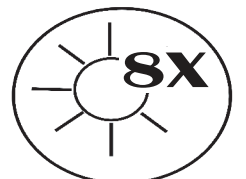
Furrion® Aurora® Outdoor Smart TVs are designed to deliver a superior 4K, ultra high-definition picture in bright areas and are perfect for partially shaded or fully shaded areas. With a 2 year warranty, every component from the screen to the housing has been designed to withstand environmental conditions such as dirt, dust, rain, humidity, UV rays and extreme temperatures.



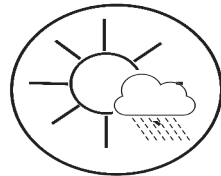
**COOLING SYSTEM**  
with 5 internal fans  
to protect the unit



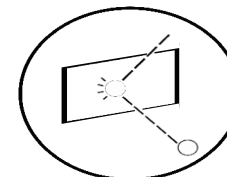
**RANGEXTEND™**  
external antennas for an  
even stronger wifi signal



**BRIGHTER SCREENS**  
that are up to 8X brighter  
than indoor televisions



**IP54-RATED**  
Weatherproof Housing  
to protect against  
the elements



**XTREMESHIELD™**  
to protect against impacts and scratches  
(Sun and Partial Sun only)



**HDR10**  
for vivid colors and deep  
rich contrast

Furrion Universal  
Outdoor Full Motion Mount



Furrion Universal  
Outdoor Fixed Tilt Mount



Furrion Universal  
Outdoor Ceiling Full Motion Mount



Outdoor TV Covers



[outdoorimg.com](http://outdoorimg.com)

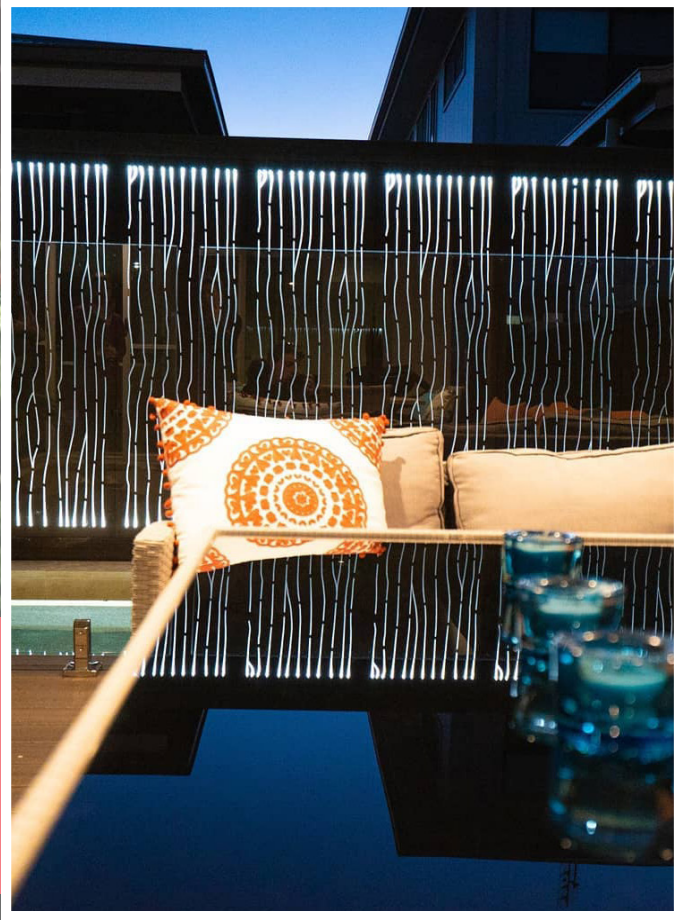
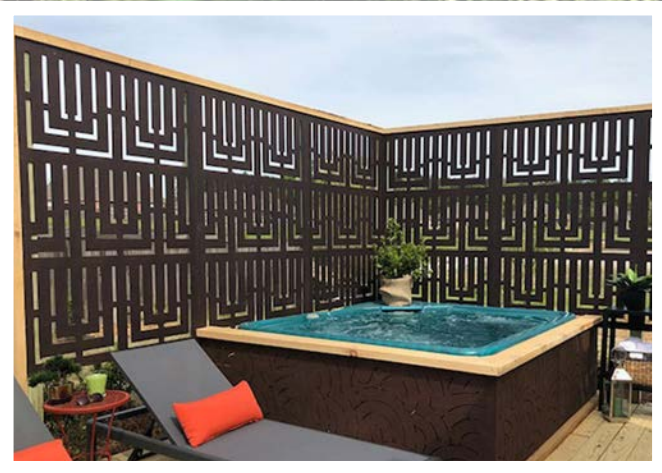




SCAN FOR MORE INFO

# Modular Decorative Screen Panels

**LIFESTYLE  
READY TO  
INSTALL**



[outdooring.com](http://outdooring.com)





SCAN FOR MORE INFO



### Luxury Outdoor Sound Demo Kit

TruAudio has developed the ultimate sales tool for the landscape audio professional. The Luxury Outdoor Sound Demo Kit comes with everything you need to setup a demonstration at a customer's location in less than five minutes. Paint the picture of how your client can take their outdoor living experience to the next level and watch your revenues sky rocket.



### Acoustiscape Landscape Speakers

TruAudio's Acoustiscape speakers bring a new dimension to outdoor audio. Available in a 4.5", 6" and 8" version, the Acoustiscape is designed to not only blend into any landscape, but provide rich sound with amazing amounts of volume. Flexible mounting options, robust design, and weatherproof quality make the Acoustiscape perfect for any outdoor installation.



[outdoorimg.com](http://outdoorimg.com)





# FIREGEAR



SCAN FOR MORE INFO

*THE BEST ROOM IN THE HOUSE*  
ISN'T IN THE HOUSE AT ALL.



EVERYTHING NEEDED FOR THE PERFECT OUTDOOR LIVING ENVIRONMENT!



BURNERS • AUTOMATION • JEWELRY • HEAT

**AWS BURNER SYSTEM**  
All Weather Electronic Ignition System



Multiple Fire Features



Pool Certified



Weather Resistant



Automation Integration

[outdooring.com](http://outdooring.com)





SCAN FOR MORE INFO



### ANGUS GRILL HEAD



### BULL KEGERATOR 6.6 cu.ft.



outdooring.com





SCAN FOR MORE INFO

Dura **BULL**™



## THE DETAILS MAKE US DIFFERENT

*DuraKitchens*™ pairs quality USA craftsmanship with cutting edge innovation. Constructed of HDPE (*High-density polyethylene*), this new Outdoor Kitchen collection offers elegance with casual sophistication. Careful detailing has gone into the design and execution of each piece, from the well crafted door embossing and edging to the innovative patented, hidden joinery technology for solid joints. The innovative materials, advanced manufacturing, and thoughtful design allow *DuraBull*™ to synthesize classic styling with a modern curve. Yes, the future of Outdoor Kitchens has arrived!



### DURABLE CONSTRUCTION

The 3/4" marine-grade HDPE is UV and weather-resistant. Cabinets will never rot, delaminate, or splinter and never need refinishing.



### LIMITED LIFETIME WARRANTY

Assures the cabinetry you are buying is of good quality and without manufacturing defects, for years of worry-free enjoyment.



### INNOVATIVE TECHNOLOGY

Uniquely constructed with a hidden patented joinery technology for a beautiful finish with no visible fasteners.



### EASY TO CLEAN

Easy-to-clean surfaces means you spend more time enjoying your Outdoor Kitchen and less time cleaning them.



### 100% RECYCLABLE

HDPE cabinets have a recycling code of 2, which means at the end of its lifetime, it is easily recycled into usable products for home and garden.



### DESIGNED IN THE USA

Discover the excellence of American ingenuity with our proprietary, and unique products. *DuraBull*™ cabinetry is manufactured and hand-assembled with materials sourced from American companies.

DOUBLE TRASH/RECYCLING DRAWER  
Poly-Glide System

SAFELY CONSTRUCTED  
CSA Approved Fully Vented Grill Cabinets

INTERIOR & EXTERIOR  
Perfect Color Match System



Dura **KITCHENS**™

HDPE Collection

## THE FUTURE OF OUTDOOR KITCHENS IS HERE!

### MYRTLE BEACH

Outdoor Kitchen - 8 ft.



Shown with: Coffee Brown Granite & Dune Base

### CHARLESTON

Outdoor Kitchen - 10 ft.



Shown with: Galaxy White Granite & Symphony Blue Base

### SAVANNAH

Outdoor Kitchen - 8 ft. + 7 ft. return



Shown with: Midnight Black Granite & Charcoal Grey Base

### AUGUSTA

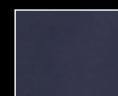
Outdoor Kitchen - 10 ft. + 7 ft. return



Shown with: Galaxy White Granite & Symphony Blue Base

Discover the many features that make the *DuraKitchens*™, a true game changer!

### Color Themes



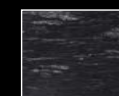
Symphony Blue Base



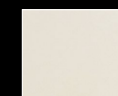
Galaxy White Granite



Charcoal Grey Base



Midnight Black Granite



Dune Base



Coffee Brown Granite

Visit [www.BullBBQ.com](http://www.BullBBQ.com) or contact us at 800-521-2855

The Brand Choice for Commercial and Professional BBQ's ©2023 Bull Outdoor Products, Inc. All Rights Reserved.

outdoorimg.com





FOLLOW US ON

