

2021 PRODUCT CATALOG



THE ONLY AGENCY OFFERING A COMPLETE BACKYARD EXPERIENCE



Formerly The Association of Pool & Spa Professionals/National Swimming Pool Foundation

IMG MAIN OFFICE

5424 Rufe Snow Drive, Suite 501
North Richland Hills, Texas 76180
(817) 281-0705 (phone)
(817) 281-0725 (fax)

OUTDECO / MODINEX	3
LA SIESTA	3
LOOP-LOC	4
INTERMATIC	5
ULTRAPURE	6
ORENDA	7
PLEATCO	8
ICO	9
IPS CONTROLLERS (INNOVATIVE POOL SOLUTIONS) ...	9
H2FLOW	10
UNION/BOXER	11
BRIGHTLINE	11

WATER TECH	12
LOCHINVAR	12
BLUE DEVIL/VALTERRA	13
ATLAS	13
HALCO/J&J ELECTRONICS/SOLLOS	14
ICT (INNOVATIVE CONCRETE TECHNOLOGY)	15
ATLANTIC WATER GARDENS/OASE	16
FLEXCRETE/VALCON INDUSTRIES	17
FIREGEAR OUTDOORS	18
BULL OUTDOOR PRODUCTS	19

Darrell Plemons
Owner – Territory Manager
(817) 228-2453
bigd@outdoorimg.com

North Texas, Oklahoma, South Louisiana & NW Arkansas

Thomas Hoppe
Territory Manager
(817) 201-9263
thomas@outdoorimg.com
DFW, East Texas, North Louisiana & Arkansas

OUTSIDE SALES TEAM

Colby Griffith
Owner – Territory manager
(210) 215-1940
colby@outdoorimg.com
Central, South & West TX, South Louisiana & New Mexico

Andrew Brown
Territory Manager
(832) 610-5286
andrew@outdoorimg.com
Houston & South Louisiana

Beth Plemons
Sales & Administrative Coordinator
(817) 281-0705

INSIDE SALES & SUPPORT

Janis Reese
Accounting/HR
817-281-0705

OUT
DECO

modinex

LA SIESTA®



OUT
DECO

Modular Decorative Screen Panels

Australian hardwood
Architectural designs
Cost-effective
Ready-to-install



outdoorimg.com



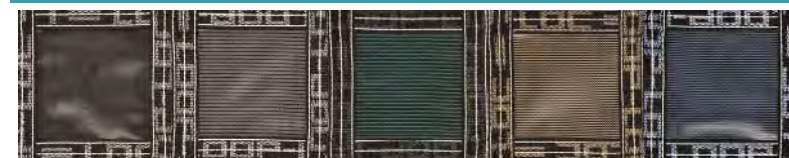
THERE'S ONLY ONE LOOP-LOC.

HERE ARE 15 REASONS WHY.

- 1 A LOOP-LOC cover is the only safety cover to be awarded UL certification year after year.
- 2 Mesh construction lets rain and melting snow drain right through.
- 3 LOOP-LOC is so durable, it's backed by a 15-year prorated warranty and so safe, it may reduce your liability insurance.
- 4 LOOP-LOC is so lightweight, putting it on and taking it off your pool is a snap.
- 5 LOOP-LOC blends beautifully into any backyard, with your choice of standard Spring Green or four optional designer colors.
- 6 LOOP-LOC's patented CABLE-LOC™ and GAPGUARD® Child Safety Intrusion Barriers close the gap created when a pool includes raised obstructions located at the cover's edge.
- 7 The polyester bonded thread used in LOOP-LOC covers is 30% stronger in thread size and produces a higher margin of safety in all seams (compared to our competitors).
- 8 Double-perimeter webbing and double-thick straps give our covers an incredibly high break strength.
- 9 We use extremely high-strength, non-corrosive 302/304 grade stainless steel springs for superior weight-bearing capacity.
- 10 Unique brass anchors recess flush with the deck when the cover is removed.
- 11 We sew the webbing to the cover using contrasting white thread, instead of black, to ensure that not a single stitch is missed.
- 12 We use 87% black yarn in our fabric for superior UV stability.
- 13 Chafe strips are manufactured with exclusively virgin material – not "regrind", which tends to stain decking.
- 14 Non-corrosive aluminum tips are double-notched for stability.
- 15 The large X-tacking on LOOP-LOC straps is sewn manually for precise placement and maximum strength.



COMPLEMENT YOUR OUTDOOR DECOR!



Covers Now Available in Aqua-Xtreme Mesh

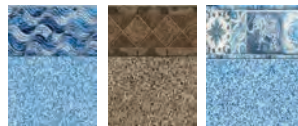


THE FIRST REMOVABLE FENCING GOOD ENOUGH TO COME FROM LOOP-LOC



LOOP-LOC is proud to introduce "IMAGE-LOC", the revolutionary way to measure covers with photos. Never A-B again! One person, one camera and following simple instructions will achieve highly accurate cover measurements.

NEW
2021



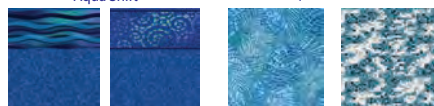
HONU w/Lapis Quartz Available in 20 & 28 mil
CAMBRIDGE w/Desert Sand Available in 20 & 28 mil
MANDALA w/Lapis Quartz Available in 28 mil

PearlEssence
Exclusively from LOOP-LOC



OCEANIA Available in 20 & 28 mil
PACIFICA Available in 20 & 28 mil

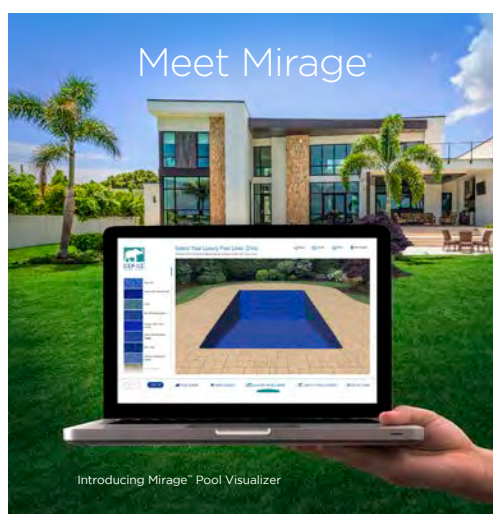
Aqua Shift Boutique Collection



HONU w/Gemite Blue Available in 28 mil
MAHALO w/Gemite Blue Available in 28 mil
PALM SPRINGS Available in 20 & 28 mil
TIMELESS Available in 20 & 28 mil

For a complete listing of all liner patterns, see 2021 Loop-Loc catalog or visit looploc.com

- + MORE EXCLUSIVE DESIGNS THAN ANY OTHER MANUFACTURER
- + HIGHEST QUALITY VIRGIN VINYL IN DURABLE 20 & 28 MIL.
- + OPTIONAL ALL-PRINT LINERS FOR ANY BOTTOM PATTERN DESIGN
- + PERFECT FIT FOR ANY POOL
- + EXCLUSIVE 20-YEAR PRORATED WARRANTY



outdoorimg.com



MultiWave™ Wireless Control System

Integrate pool and spa controls for added convenience and improved efficiency.



PE653
Receiver



PE953
Wireless Remote Control



PE24VA
Valve Actuator



PE5043ME
Expansion Module



178PA28A
Air Temp. Sensor



PA122
Water Temp. Sensor

Surge Protection

Get 100% coverage for your most sensitive equipment. Designed with trusted, state-of-the-art TPMOV® (Thermally Protected Metal Oxide Varistor) surge protection technology to eliminate the potentially hazardous failure.



Actuators

Designed to provide reliable control of 2-way and 3-way diverter valves for pool/spa combination and water features.



Mechanical Timers and Freeze Protection

Keep lights and appliances on when they need to be, off when they don't. Protect pool and spa equipment against freeze damage.



J Boxes and Transformers

Ideal for low voltage and LED Lighting.



Weatherproof Covers

Ensure outlets and controls stay protected from the elements and out of harm's way.



Replacement Relays



Integrating automation, safety and reliability by providing better solutions for the pool, yard and entire home.

outdoorimg.com

Chlorine Shortage?

A MENU MANAGEMENT APPROACH TO CLEAN WATER

Even though there is no proven effective replacement for Chlorine or Bromine in the disinfection process in swimming pools & spas, alternative treatments such as Ozone and UV can dramatically improve water quality with less sanitizers.

Whereas Chlorine and Bromine provide a measurable residual for the sanitization process, they are often unable to complete the water purification process on their own.

Frequently contaminants multiply too quickly for these sanitizers to effectively kill all the viruses, bacteria, and algae found in pools & spas.

Furthermore, after water is sanitized to be classified as "Clean" water, the dead contaminants must be removed or Oxidized.

AUTHORIZED DEALERS MAY QUALIFY FOR
ADDITIONAL REBATES AND INCENTIVES



**UV LIGHT
STERILIZES
OR STOPS THE
REPRODUCTION
OF CONTAMINANTS
IN ORDER FOR A
SANITIZER
TO EFFECTIVELY
"KILL" THE
CONTAMINANTS**

POOL UNITS



**Ozone reduces Chlorine
Consumption as much as 70%
by Oxidizing or removing dead
contaminants from the water.**



SPA UNITS

SCALE AND METAL CONTROL

Great for Pool Startups! Removes and helps prevent calcium scale and metal stains



got scale?

SC-1000 Scale & Metal Control is a non-phosphonic acid sequester formulated to control minerals and metals in the water. Use SC-1000 during initial fill-up of the pool, along with the Orenda App to balance the LSI of the water. Because SC-1000 is not phosphate-based, it does not conflict with phosphate removers like PR-10,000.

DOWNLOAD OUR APP



VISIT ORENDATECH.COM FOR TRAINING



STARTUP TANKS



PHOSPHATE REMOVER CONCENTRATE

All-Natural formula removes phosphates on contact



PR-10,000 is the strongest, most concentrated phosphate remover available in the aquatics market. It is a rare-earth formula that reacts immediately with phosphates on contact. It crystallizes phosphorous, which then falls out of solution to be filtered out or vacuumed. PR-10,000 will cloud up the water for about 24-36 hours in the presence of high phosphates, but the cloudiness depends on the amount of phosphates in the water. Cloudiness is a normal part of the reaction. Watch videos on our website for more.

ENZYME + PHOSPHATE REMOVER

All-Natural enzyme formula reduces non-living organics and phosphates



CV-700 Enzyme + Phosphate remover improves water clarity and chlorine efficiency. The enzymes break down and digest non-living organic waste, which helps chlorine get through contamination and build a residual of free available chlorine for sanitation. Removing phosphates benefits chlorine too; phosphates weaken chlorine (HOCl to OCl^-). Visit our website to learn why.

ENZYME WATER CLEANER

All-Natural formula reduces non-living organics to create optimal water clarity



CV-600 Catalytic Enzyme Water Cleaner Concentrate is a unique, stabilized enzyme that effectively breaks down and digests organic contaminants commonly found in pools, spas and other recreational water. Routine application of CV-600 will positively maintain water clarity, directly address organic contamination, and boost chlorine efficiency.

CHITOSAN CLARIFIER + ENZYME

All-Natural clarifier with no synthetic polymers or dyes



CE-Clarifier+ Enzyme is a potent pool clarifier. The Chitosan attracts particles to be filtered out, while the enzymes break down and digest oils and other non-living organic waste.

Pleatco AdvancedULTRA[™]

REVOLUTIONARY FILTRATION TECHNOLOGY
PATENT PENDING

FEATURING
**Pleatco
PUREPLEAT**[™]
PATENT PENDING

- ✓ OPEN PLEAT PATH
- ✓ ENHANCED FLOW DYNAMICS
- ✓ OPTIMIZED PERFORMANCE

REVOLUTIONARY
**NEW
TECHNOLOGY**

**KEEPS
PLEATS
RIGID
AND
EVENLY
SPACED!**

ALSO FEATURES
PleatcoSmartTrack
TIMESTAMPING TECHNOLOGY



GROUND BREAKING BANDLESS CARTRIDGE

PURE PLEAT DEPTH
Optimal use of fabric surface area

PURE PLEAT STABILITY
Ultra-strong pleats - evenly spaced
Unprecedented filtration efficiency

PURE PLEAT PERFORMANCE
Reliability & longer cycle times

PURE CLEANABILITY
Super easy to clean - saves time



PleatcoPureSTART[™]

DISPOSABLE PRE-FILL SEDIMENT FILTER



FEATURES **EXCLUSIVE
PLEATCO ADVANCED[®]
MELT-SPUN
DEPTH FILTRATION MEDIA**



**ATTACHES TO A REGULAR
GARDEN HOSE**



Leave the washing up to us!



CARTRIDGE FILTRATION REDEFINED!

We've completely redefined the pool filter cartridge adopting a sophisticated manufacturing process to create perfect pleats which combined with Pleatco Advanced Point Bonded Filtration Fabric[™] and our Free Flow Core Technology[™], delivers a phenomenal new level of cleaning power like never before!



IPS Controllers

Simply intelligent water care.



A SMARTER APPROACH
To maintaining Healthier, Clearer Water



Measures



Analyzes



Alerts



Recommends

ICO offers a unique patented technology that monitors and learns the behavior of your specific pool water 24/7, whether you are near your pool or far away.



WATER INDEX



Our smartphone app features an intuitive Water Index providing you with a convenient and colorful way to know the quality of your pool water by simply looking at the wave.

Spa unit available as well

● Water Quality
● pH

● Temperature
● TDS

● Sanitizer ORP
● Salt

CHEMICAL AUTOMATION MADE EASY



M920CA / M920wCA
(with WiFi)
Automated pH with Dual ORP
Free Web-based Monitoring
Logs & Displays FAC (PPM)



M920 / M920w
(with WiFi)
Automated pH with Dual ORP
Free Web-based Monitoring



M770
Automated pH
and ORP Controller



M820
Automated pH
with Dual ORP Controller



M790
Automated pH
and ORP Controller



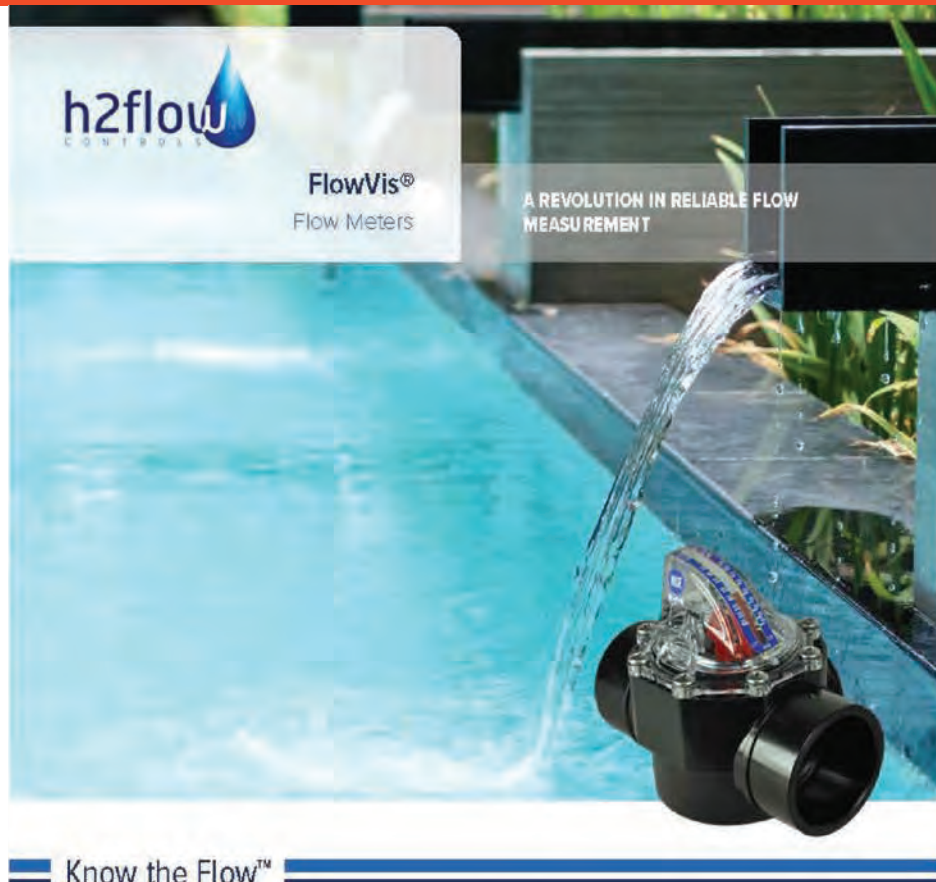
VidaPure™
Chemical Controller for
Residential Pools



REMOTE MONITORING

Our Remote Monitoring Website allows you to stay in control of clean, clear water 24/7 from your smartphone or tablet.

outdoorimg.com



FLOWVIS® allows you to:

Save Energy

Maximize energy saving potential by running pump at its optimal speed.

Skim Efficiently

Balance the filtration system by knowing the flow.

Reduce Chemical Usage

Reducing the Flow rate is what is required, but can also reduce chemical usage.

Maintain a Cleaner Pool

Optimize the filter's efficiency by operating at its effective flow rate.

Ensure Heater Efficiency

Achieve maximum heat transfer by operating at the optimal flow rate.

Optimize Water Feature Operation

Achieve precise and repeatable valve positioning for perfect water feature appearance.



FLOWVIS®
DIGITAL



PSP20
ANTI-ENTRAPMENT
DEVICE



ECO-FLOW®
AQUATIC AC DRIVES



Formulated to precise standards Repair soft or rigid vinyl plastic even **UNDER WATER**



Boxer #100 Vinyl Adhesive
Repairs Damaged Vinyl Underwater.

**CAT. NO. 859
POOL REPAIR KIT**
CONTAINS: 2 oz. tube of #100 vinyl adhesive 130 sq. in. of patching vinyl and dauber-applicator.
PACKED: 24 per display carton.

**CAT. NO. 759
POOL REPAIR KIT (1 OZ.)**
CONTAINS: 1 oz. tube of #100 vinyl adhesive and 42 sq. in. of patching vinyl.
PACKED: 24 per shipping carton.

**CAT. NO. 760
POOL REPAIR KIT (1/2 OZ.)**
CONTAINS: 1/2 oz. tube of #100 vinyl adhesive and 21 sq. in. of patching vinyl.
PACKED: 24 per shipping carton.



**CAT. NO. 116
VINYL ADHESIVE**
CONTAINS: One pint cans of #100 Vinyl Adhesive and dauber-applicator.
PACKED: 6 per shipping carton.

**CAT. NO. 104
VINYL ADHESIVE**
CONTAINS: 4 oz. cans of #100 Vinyl Adhesive and dauber-applicator.
PACKED: 24 per shipping carton.



**CAT. NO. 110
POOL REPAIR KIT**
CONTAINS: 4 oz. can of #100 vinyl adhesive, dauber and 500 sq in of patching vinyl. Our DELUXE KIT features an ample supply of liquid adhesive and plenty of vinyl.
PACKED: 24 per shipping carton.



For over half a century, the Boxer "100" Vinyl Repair Kit (the original Boxer product) has been a popular tool for mending vinyl.

Since 1950

Vinyl Patches

CAT. NO. 20, 24 and 26
EACH CONTAINS: Two pieces of Heavy 20 Gauge Vinyl, over 260 square inches.
#20 White Vinyl - 24 per shipping carton.
#24 Blue Vinyl - 24 per shipping carton.
#26 Clear Vinyl - 24 per shipping carton.

CAT. NO. 25
CONTAINS: Two pieces of 12 Gauge Clear Vinyl
Packing Material. Over 260 square inches.
PACKED: 24 per shipping carton.



THE BENEFITS ARE CLEAR.

Clearer, Cleaner Water

BrightLine™ quickly and efficiently removes particles as fine as 5 microns

Longer Lasting

Since BrightLine does not breakdown like typical sand filter media, it can last up to 3 times longer

Backwash Savings

Because BrightLine utilizes the entire filter bed and does not pack or channel, backwashing takes less time and is required less frequently, saving water and chemicals

Less Media Required

BrightLine is 20% less dense than typical sand filter media, requiring less media to fill the same space

Environmentally Friendly

BrightLine is made from 100% recycled materials
Available in 40 lb. clear, plastic bags.
For use in sand filters including those which specify #20 silica sand.

BETTER THAN SAND.



LET BOXER'S FAMILY OF PRODUCTS HELP KEEP THE FUN IN THE POOL!

outdoorimg.com



Owning a pool made easy!



PRECISION 2.0LI
SKU # 50000PL

Professional Vacuuming Equipment
No Service Pro Can Live Without

HIT YOUR MARK...EVERY TIME!

- Save Time On Every Service Call
- No Hoses or Hook Ups

The Complete **PRECISION** Package Includes:

- Two (2) Lithium Batteries
- Vinyl Surface Vacuum Head
- Wall Charger and Car Charger
- Gunite Vacuum Head
- Three (3) Reusable Filter Bags
- Shoulder Strap

Battery Powered Cleaners • Robotic Pool Cleaners • Pool Accessories

Water Tech has developed one of the most diversified line-ups of pool and spa vacuum cleaners, providing cleaning solutions for every pool, spa, and budget!

FREE
Point of Sale
display with
purchase!



ATTENTION TO EVERY DETAIL SATISFIES EVERY NEED!

Adding a high-end pool or spa reflects a desire for the good life. It's an investment that enhances lifestyle – an oasis of relaxation and recreation, accessible any time, right outside the door.

Today, pool and spa builders must promise fast heat-up and comfortable water temperature, available quickly and efficiently. The master builder's pool heater checklist also includes...

- Superior quality for trouble-free performance, backed by service-friendly design
- Attention to details for fast, easy installation to reduce labor and material costs
- Installation flexibility to work seamlessly with the aesthetics of the new pool or spa

Lochinvar® is the most innovative manufacturer of water heaters and heating boilers, serving the extraordinary demands of commercial buildings throughout the world. Our engineering excellence and commitment to understanding customer needs has produced EnergyRite®, the industry's most advanced pool and spa heater, for homeowners who want the best of everything.

**HOT PERFORMANCE,
COOL FOR THE ENVIRONMENT!**



EnergyRite heats up fast, saves money and helps conserve our natural resources with Low-NOx emissions that meet or exceed the most stringent "green" standards, anywhere in the country!

EnergyRite
Pool & Spa Heater

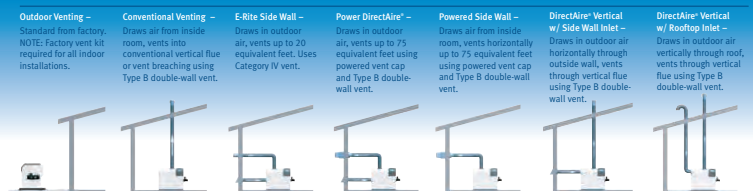
HEAT UP FASTER!

Five EnergyRite models offer power to guarantee speed-heating for any size pool or spa...from 150,000 Btu/hr to an industry-maximum 400,000 Btu/hr. And Lochinvar's engineering delivers the highest thermal efficiency in its class. It's a combination that provides the industry's fastest heat-up time, and uses less energy so homeowners save money every time they heat their pool or spa!

THE FORMULA FOR THE FASTEST COMFORT HEAT-UP IS SIMPLE.

1. Provide enough heating power to raise water temperature quickly, on demand.
2. Engineered for efficiency, driving maximum heat into the water.

EASY VENTING FOR EVERY INSTALLATION:



COPPER-FIN²



outdoorimg.com

A full line of Blue Devil maintenance accessories and Valterra products are offered to the Pool & Spa Industry on a worldwide basis. We specialize in pool water test kits and reagents, valves, vacuums, brushes, nets, and poles for use by consumers and pool service professionals.



Brushes



Hoses



Leafbaggers



Leaf Rakes &
Skimmer Nets



Poles



Pool Water
Testing Products



Pool & Spa
Accessories



Pumps, Filters
& Combo Packs

**Pool & Spa repairs
are child's play ...
with
Epoxybond®**

**Pool and spa repairs
are quick, easy and
inexpensive with Atlas'
family of Epoxybond® products:**

POOL PUTTY stops leaks and repairs concrete – underwater!

POOL PASTE resets tiles and fixes hairline cracks in virtually any surface – including plastic, concrete and fiberglass.

POOL PASTE FAST SET makes repairs to hot tubs, spas and pools – in just 5 minutes!

CONCRETE POOL PATCH repairs cracks, chips or spalled surfaces; molds new corners and coping; and sets anchor bolts – all in only 10 minutes!



ColorSplash® **pureWHITE™**



VU
1-1/2" LIGHT



POOL/FOUNTAIN
CONTROLLER



LED POOL/SPA
FIXTURES



LED UNDERWATER
FOUNTAIN FIXTURES



LED POOL/SPA
REPLACEMENT LAMPS



Control landscape lighting power and color from your phone



Antique Brass



Brass



Copper



Stainless Steel



Textured Black



Textured Bronze



STONE SHOW H₂O
IS AVAILABLE IN

ENHANCING

INVISIBLE

&

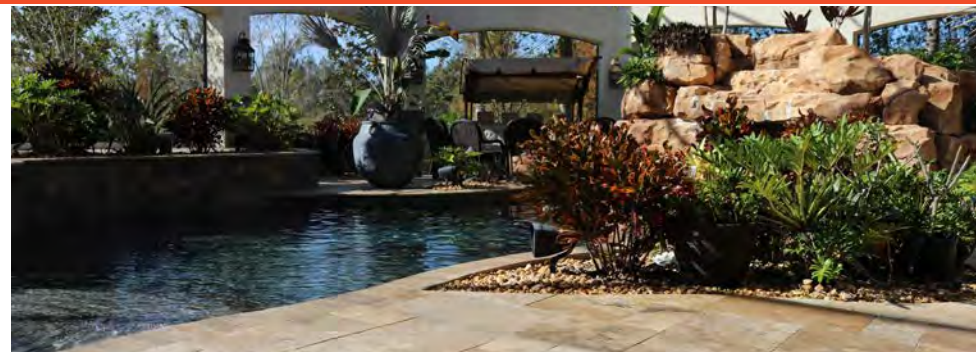
NANO ENHANCING*

THREE UNIQUE STYLES TO ACHIEVE
THE LOOK THAT YOUR JOB NEEDS!



open to learn more!

* Not available in California



TOTAL SURFACING SYSTEMS

REASONS TO SEAL PAVERS
OR
NATURAL STONE

PROTECTION OF INVESTMENT
COLOR RETENTION
RESISTANCE OF THE ELEMENTS
INHIBIT MOLD AND ALGAE GROWTH
EASIER CLEANING AND MAINTENANCE



A complete line of sealers, resins, integral colors and professional coatings to create and protect concrete and stone in extreme environments. ICT products are widely used on Pool Decks, Patios, Driveways, Hotels, Condominiums, as well as Restaurant Floors and Counter Tops.



**WATER
SHADES**
SEMI-TRANSPARENT CONCRETE STAIN

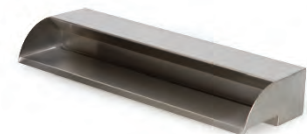


H₂COOL

THE CHILLEST WAY TO KEEP
YOUR CONCRETE COOL

Our new **H₂COOL** products are formulated with solar infrared reflective pigments, which will reflect IR rays that cause heat and cause surface deterioration.

Reflection of IR rays will keep the surface cooler to the touch and give a much longer lifespan than traditional pigmented coatings!



ASK ABOUT THE **AWG AUTHORIZED PROFESSIONAL CONTRACTOR PROGRAM**

FlexCrete

VALCON INDUSTRIES

FlexCrete WATERPROOFING

VALCON INDUSTRIES

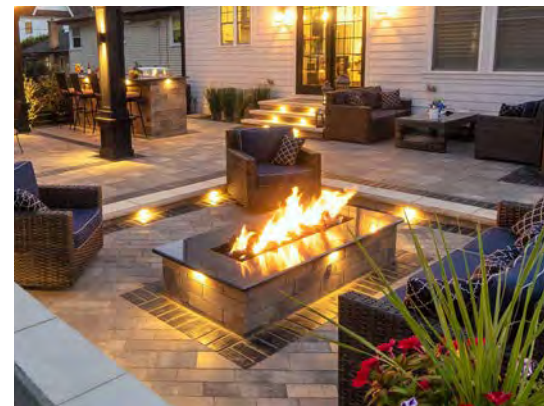




THE BEST ROOM IN THE HOUSE
ISN'T IN THE HOUSE AT ALL.



EVERYTHING NEEDED FOR THE PERFECT OUTDOOR LIVING ENVIRONMENT!



BURNERS



AUTOMATION



JEWELRY

AWS BURNER SYSTEM
All Weather Electronic Ignition System



Weather Resistant



Multiple Fire Features



Pool Certified



Automation Integration



BULL
GRILLS

LIFETIME
WARRANTY



ANGUS GRILL HEAD



DOUBLE DOOR
REFRIGERATOR

BULL **KEGERATOR 6.6 cu. ft.**



